

WERRIS CREEK COAL COMMUNITY CONSULTATIVE COMMITTEE

67th Meeting of the Committee held at the Werris Creek Mine on Wednesday, 29 April 2026 at 9:30AM

Meeting opened at 9:40AM

Record of Attendance

Michael Silver OAM	Independent Chairperson
Jane Bradford OAM	Independent Minute Taker
Mike Lomax	Community Representative
James O'Brien	Community Representative
Noel Taylor	Community Representative
Matt Hollis	Whitehaven Coal - Environmental Manager
Keely Boyton	Whitehaven Coal – Environmental Officer

Apologies

Nil

1 Acknowledgement of Country

The Chair acknowledged the Traditional Owners of the land on which this meeting is being held and recognised their continuing connection to the land, water and culture, paying respects to their Elders past, present and emerging.

2 Declaration of Pecuniary or Other Interests

The Chair advised that his meeting expenses are borne by the proponent.
Other members – Nil

3. Chair's Minute

The Chair provided an overview of the status of the mine and consequently the future operation of the Committee. He noted that the mine will be closed from 1 May 2026 with the site entering "post closure phase" and subject to environmental monitoring and maintenance as required. Mike Silver highlighted the probable ongoing community interest in water management on the site particularly regarding the residual void and the need for the community to be kept informed of activities on the site.

In response, Matt Hollis clarified the relationships between ground and surface water in the area to the mine. He advised that water in Quipolly Creek is not linked to water in the mine and explained the geological formations associated with water movement at the mine and the care taken in not fracturing the rock aquitard separating the werrie basalt aquifer from the open cut mining void throughout the mining process.

Mike Lomax questioned how long will water monitoring be undertaken. Matt Hollis replied, "as long as is required and subject to departmental requirements". Noel Taylor enquired whether bores will still be monitored. Matt Hollis indicated that monitoring of bores will also continue for as long as specialist advice and departmental approvals require.

The Chair advised that the DPIE indicated that it was a matter for the Committee to determine how it wished to be informed of activities following the site entering "post closure phase".

After further discussion it was agreed:

"That face-to-face meetings of the CCC be suspended with the Proponent to submit a six-monthly operational report and an annual overview report to the Chair for distribution to CCC members."

Moved Mike Lomax, seconded Noel Taylor.

4 Minutes of the 66th meeting held on the 17 September 2025 were approved and finalised when the Independent Chairperson signed the Minutes on 15 November 2025.

5 Half Yearly Environmental Monitoring Report – July to December 2025

Matt Hollis went through the Report.

The Committee noted the aerial photograph of the mine showing rehabilitation up to date:

- Most rehabilitation work has been completed - ready for closure monitoring and maintenance phase
- Most fill-in work now completed
- Monitoring water levels in residual hole

6. Operational Overview

Matt Hollis provided an overview of the status of the site:

Monitoring

- Some environmental monitoring will gradually be scaled back such as noise and air quality monitoring, but water monitoring and reporting will continue. Whitehaven will be responsible for ongoing site management for 10 to 15 years before the mining lease can be extinguished – this will be subject to satisfactory development and growth of vegetation against completion criteria targets and landform stability performance.
- There are no definite plans regarding future site or residual infrastructure uses however discussions with relevant stakeholders are continuing as relevant.

Compliance

- No compliance issues

Rehabilitation

Matt Hollis stepped the Committee through recent rehabilitation activities:

- Removing / filling in the some dams that are no longer in use – these dams were for mining purposes and did not capture surface water runoff. Some of the large mine water dams at the southern end of the site will be retained in the short term pending outcomes of any beneficial site reuse options and the need for surface water storage.
- Planting of trees, shrubs and grasses will continue on rehabilitated areas of the site as well as infill areas where existing vegetation requires assistance to meet species targets and increased vegetation coverage.
- Feral animal control –wild pigs still an issue. Mike Lomax highlighted a weed control problem on a short section of the rail line in the vicinity of the rail loop. Matt Hollis will check the ownership of this section of the old Binnaway line. **ACTION**
- Removal of infrastructure continues – coal loader dismantled and overhead bins to be removed shortly – by end of June 2026 (current financial year).

Complaints

- No complaints received

Coming Up

- WCC will continue to finish final landform.

- WCC will finish topsoiling landform areas and seed these areas
- Required maintenance works will continue to be undertaken including erosion control, erosion repairs, additional revegetation works and infill planting, weed and feral animal management.
- Decommission of Mine Water Dam (Dam 3). Balance of dams – Pending beneficial reuse opportunities.
- Decommission and removal of former coal handling infrastructure
- Environmental Monitoring and vegetation performance monitoring will continue as per normal.

7. General Business

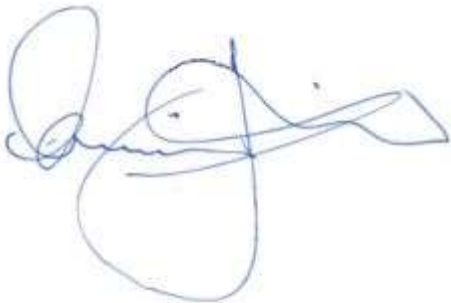
Staff – The Chair enquired as to staff levels on the site following closure. Matt Hollis indicated there will be two rehab and closure staff on site periodically moving forward as well as supporting maintenance contractors. All other operational staff will finish-up on 1 May 2026. There will be project teams on site from time-to-time whilst all other required works will be undertaken by contractors when required. Any further demolition of site infrastructure such as shedding and office buildings will be undertaken at a future date if required pending the outcome of ongoing beneficial reuse options being explored for the site.

Land Disposal – Noel Taylor enquired whether mine owned land will be sold. Matt Hollis advised he was not aware of any decisions on land disposal although there have been discussions on potential reuse activities and development opportunities.

7. The Chair thanked the previous Chairs, Committee members and Staff for their participation and contribution over the years.

8. Meeting closed at 11:05AM

Meeting Minutes Approved:

A handwritten signature in blue ink, appearing to read 'Michael J Silver', is written over a faint, light blue circular stamp or watermark.

**Michael J Silver OAM
Independent Chairperson**

Date: 28 May 2026



WERRIS CREEK COAL PTY LTD

QUARTERLY ENVIRONMENTAL MONITORING REPORT

July – December 2025

This Environmental Monitoring Report covers the period 1st July to 31st December 2025 for the Werris Creek Coal Mine Community Consultative Committee.

The report includes environmental monitoring results from the on-site Weather Station, Air Quality, Noise, Surface Water, Groundwater and Discharge Water Quality together with any community complaints received and general details on site environmental matters.

Note: Elevated monitoring results above the relevant monitoring criteria are highlighted in **yellow**.

CONTENTS

1.0 METEOROLOGY 3

1.1 WEATHER STATION 3

2.0 AIR QUALITY..... 5

2.1 HVAS (PM₁₀) and TEOM (PM₁₀ & PM_{2.5})..... 5

2.1.1 Monitoring Data Results..... 5

Yellow Bold – Elevated dust level. 5

2.1.2 Discussion - Compliance / Non-Compliance 5

2.2 WERRIS CREEK MINE DEPOSITED DUST 6

2.2.1 Monitoring Data Results..... 6

2.2.2 Discussion - Compliance / Non-Compliance 6

2.3 AIR QUALITY COMPLAINTS 6

3.0 NOISE 6

3.1 OPERATIONAL NOISE 6

3.1.1 Monitoring Data Results..... 7

3.1.2 Discussion - Compliance / Non-Compliance 10

3.2 Noise complaints 10

4.0 BLASTING 10

5.0 WATER 10

5.1 GROUND WATER..... 10

5.1.1 Monitoring Data Results..... 11

5.2 SURFACE WATER..... 12

5.2.1 Monitoring Data Results..... 12

5.2.2 Discussion - Compliance / Non-Compliance 12

5.3 SURFACE WATER DISCHARGES..... 13

5.3.1 Monitoring Data Results..... 13

5.3.2 Discussion - Compliance / Non-Compliance 13

5.4 WATER COMPLAINTS 13

6.0 COMPLAINTS SUMMARY..... 13

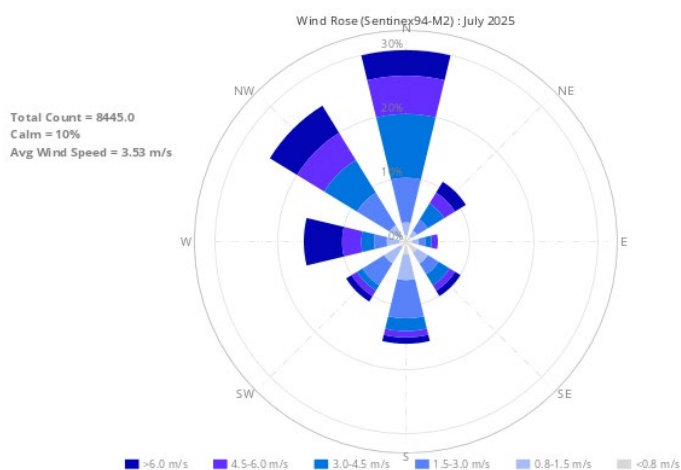
7.0 GENERAL 13

1.0 METEOROLOGY

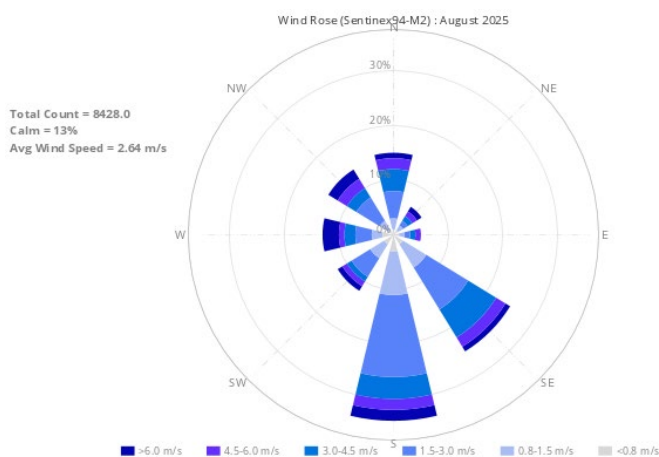
1.1 WEATHER STATION

Werris Creek Coal (WCC) collects meteorological data from the onsite weather station located on the top level of the overburden emplacement. The following table summarises rainfall data for the last six months. The monthly rainfall during the reporting period was above the historical average in July and August 2025 but below for September to December 2025. Directional wind data, presented in the wind-rose figures below, indicate the prevailing wind direction during the reporting period was predominantly from the north during July and September to November 2025 and primarily from the south in August and December 2025.

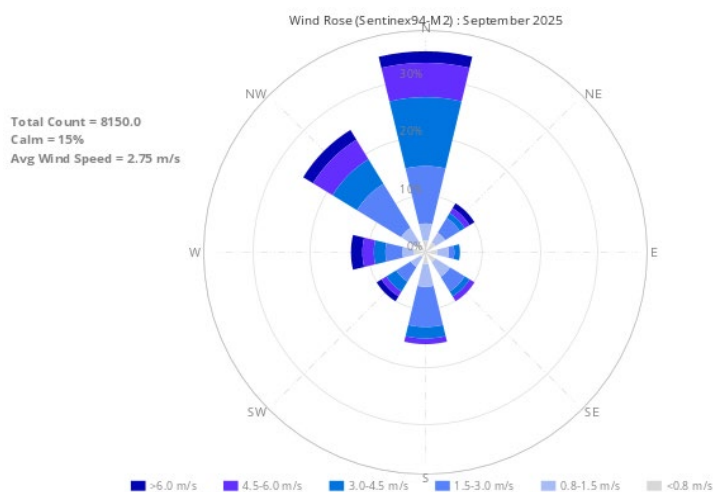
Month	Rainfall (mm)		
	Onsite	Historical Average	2025 Total
July 2025	69.6	43.0	538.0
August 2025	97	38.3	635.0
September 2025	46.6	48.9	681.6
October 2025	39.6	61.5	721.2
November 2025	63.2	88.7	784.4
December 2025	35	84.2	819.4



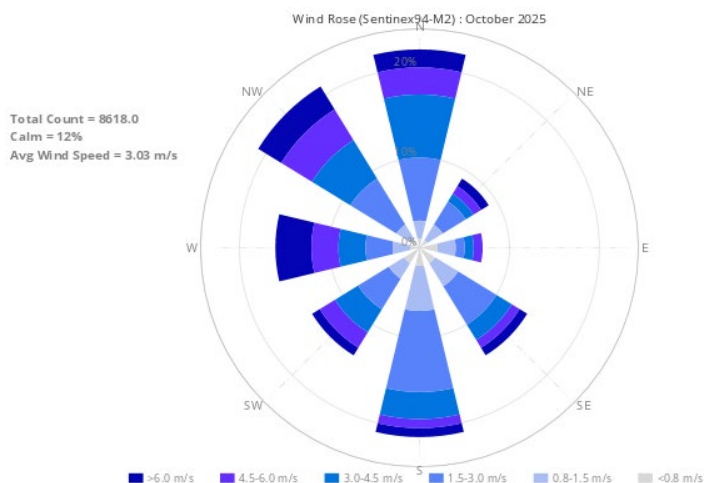
JULY 2025



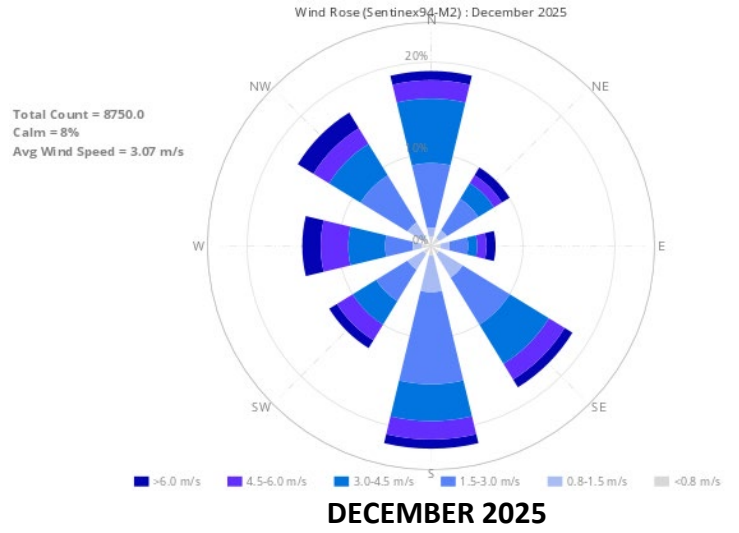
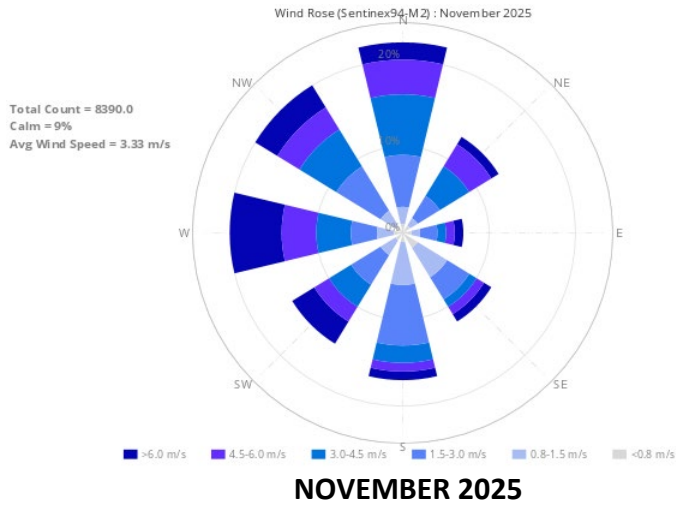
AUGUST 2025



SEPTEMBER 2025



OCTOBER 2025



2.0 AIR QUALITY

2.1 HVAS (PM₁₀) and TEOM (PM₁₀ & PM_{2.5})

WCC operates five High Volume Air Samplers (HVAS), four sites measuring particulate matter less than 10 microns (PM₁₀) and one site measuring total suspended particulate (TSP) matter. HVAS sampling is scheduled every 6 days for a 24-hour run period in accordance with Environment Protection Authority (EPA) guidelines. Results are reported in micro grams per cubic metre (µg/m³) of air sampled. In addition, WCC operates a Tapered Element Oscillating Microbalance (TEOM) monitor in Werris Creek measuring real time PM₁₀ and PM_{2.5} (particulate matter less than 2.5 microns) dust levels. Dust monitoring locations are identified in **Figure 1**. The average results for the last six months are provided in the table below.

2.1.1 Monitoring Data Results

The average results for the last six months are provided in the table below.

Yellow Bold – Elevated dust level.

MONITORING LOCATION	24Hr Maximum (µg/m ³)	JUL 2025 (µg/m ³)	AUG 2025 (µg/m ³)	SEP 2025 (µg/m ³)	OCT 2025 (µg/m ³)	NOV 2025 (µg/m ³)	DEC 2025 (µg/m ³)	2025 ANNUAL AVG (µg/m ³)	CRITERIA (µg/m ³)	
									Annual	24hr
PM _{2.5} – TEOM92 “Werris Creek”	38.9	10.8	1.5	3.8	4.4	3.9	8.6	5.8	-	-
PM ₁₀ – TEOM92 “Werris Creek”	37.9	12.5	4.2	9.9	12.2	11.7	13.8	10.7	30	50
PM ₁₀ – HVP20 “Tonsley Park”	22.3	4.7	3.3	11.9	11.2	13.9	6.6	8.1	30	50
PM ₁₀ – HVP1 “Escott”	27.6	2.4	2.3	7.8	14.8	13.7	5.2	7.5	30	50
PM ₁₀ – HVP11 “Glenara”	36.6	3.7	3.2	12.6	21.5	12.3	9.2	11.9	30	50
PM ₁₀ – HVP98 “Kyooma”	24.4	1.8	2.0	7.5	13.6	11.2	5.2	5.9	30	50
TSP – HVT98 “Kyooma”	54.0	4.4	4.3	12.7	37.2	22.1	11.6	13.2	90	-

2.1.2 Discussion - Compliance / Non-Compliance

All TSP, PM₁₀ and PM_{2.5} dust results were within criteria during the period.

2.2 WERRIS CREEK MINE DEPOSITED DUST

Deposited dust monitoring measures particulate matter greater than 30 microns in size that readily settles out of the air related to visual impact. Dust deposition is monitored at 18 locations around WCC. Sampling is scheduled monthly in accordance with EPA guidelines and results are reported as grams per square metre per month (g/m².month). Dust monitoring locations are identified in **Figure 1**.

2.2.1 Monitoring Data Results

The results for the last six months are provided in the table below.

MONITORING LOCATION	JUL 2025	AUG 2025	SEP 2025	OCT 2025	NOV 2025	DEC 2025	2025 ANNUAL AVG (g/m ² /month)	Annual Criteria (g/m ² /month)
	(g/m ² /month)							
DG1 "Escott"	0.2	0.2	0.1	0.2	0.5	0.9	0.4	4.0
DG2 "Cintra"	0.7	0.7	0.3	0.5	1.9	2.4	1.5	4.0
DG3 "Eurunderee"	0.3	1.5	1.6	0.4	0.7	1.9	0.8	4.0
DG5 "Railway View"	1.1	1.7	6.2*	3.6*	1.3	2.0	1.1	4.0
DG9 "Marengo"	0.3	0.2	1.7	0.2	0.9	1.8	0.6	4.0
DG11 "Glenara"	0.9	0.3	0.4	2.8	1.0	1.6	0.8	4.0
DG14 "Greenslopes"	0.3	0.5	0.1	0.6	2.1	2.5	1.2	4.0
DG15 "Plain View"	0.4	0.7	0.6	0.3	0.6	1.5	0.5	4.0
DG17 "Woodlands"	1.7	1.5	0.3	0.5	1.0	3.6	1.3	4.0
DG20 "Tonsley Park"	0.5	1.3	0.3	0.5	0.8	2.3	0.8	4.0
DG22 "Mountain View"	0.7	0.4	0.4	0.3	0.9	1.8	1.0	4.0
DG24 "Hazeldene"	2.6	2.9	1.2	1.1	2.6	4.2*	1.7	4.0
DG34 8 Kurrara St	0.3	0.5	0.2	0.4	1.1	1.4	0.6	4.0
DG62 Werris Creek South	0.3	0.1	0.2	0.3	0.7	1.3	0.4	4.0
DG92 Werris Creek Centre	0.8	0.6	0.3	0.3	0.7	1.8	0.7	4.0
DG98 "Kyooma"	0.3	0.1	0.1	0.4	0.5	1.2	0.4	4.0
DG101 "Westfall"	0.6	0.5	0.5	0.6	0.9	5.1	1.3	4.0
DG103 West Street	1.4	3.3	1.6	1.0	1.8	2.4	2.0	4.0

* - sample contaminated with excessive organic matter (>50%) from non-mining source (i.e., bird droppings and insects); # - indicates sample is contaminated from a Non-Werris Creek Coal dust source; **Yellow Bold** – Elevated dust level; NS - No Sample (bottle and funnel shattered)

2.2.2 Discussion - Compliance / Non-Compliance

All monthly dust deposition gauge results were below the annual criteria of 4.0 g/m²/month throughout the period with the exception of:

- DG101 (Westfall) exhibited high dust levels in December 2025.

2.3 AIR QUALITY COMPLAINTS

There were no dust complaints recorded during the period.

3.0 NOISE

3.1 OPERATIONAL NOISE

Monthly attended noise monitoring is undertaken representative of the following 16 properties from 13 monitoring points below. Attended noise monitoring was undertaken twice for either 60 minutes at privately owned properties or 15 minutes at properties with private agreements; representative of the day period and the evening/night period.

3.1.1 Monitoring Data Results

The noise results for the last six months are outlined in the tables below. Noise monitoring locations are identified in Figure 2.

10th & 11th Thursday-Friday, July 2025

Location		Day dB(A) L _{eq} 15min	Criteria dB(A) L _{eq} 15min	Evening/Night dB(A) L _{eq} 15min	Criteria dB(A) L _{eq} 15min
A	"Rosehill" R5	Inaudible#	35	Inaudible#	35
B	West Quipolly (R7*, R8*, R9* & R22*)	Inaudible#	40	Inaudible	40
C	Central Quipolly(R10*, R11*)	Inaudible#	40	Inaudible	40
D	"Hazeldene" R24	Inaudible#	37	Inaudible	37
E	"Railway Cottage" R12	Inaudible#	38	Inaudible#	38
F	"Talavera" R96	Inaudible#	38	Inaudible#	37
H	"Kyooma" R98	24#	35	Inaudible#	35
I	Kurrara St, WC R57	Inaudible#	35	Inaudible#	35
J	Coronation Ave, WC	Inaudible#	35	Inaudible#	35
K	Alco Park (R21*)	Inaudible	40	Inaudible#	40
L	West St, WC (R103)	Inaudible	35	Inaudible#	35

WC – Werris Creek; * - Private agreement in place with resident; **Yellow Bold** – Elevated noise; # Adverse weather with wind >3m/s, temperature inversions >+12°C/100m or >2m/s and >0°C/100m; 1 – R22 criteria is 36 dB(A) L_{eq 15min} while R9 is 37 dB(A) L_{eq 15min}

NM- Denotes Not Measurable. If site only noise is noted as NM, this means some noise from the source of interest was audible at low-levels, but could not be quantified

15th Friday, August 2025

Location		Day dB(A) L _{eq} 15min	Criteria dB(A) L _{eq} 15min	Evening/Night dB(A) L _{eq} 15min	Criteria dB(A) L _{eq} 15min
A	"Rosehill" R5	Inaudible	35	Inaudible#	35
B	West Quipolly (R7*, R8*, R9* & R22*)	Inaudible	40	Inaudible#	40
C	Central Quipolly(R10*, R11*)	Inaudible	40	Inaudible#	40
D	"Hazeldene" R24	Inaudible	37	Inaudible#	37
E	"Railway Cottage" R12	Inaudible	38	Inaudible	38
F	"Talavera" R96	Inaudible	38	25#	37
H	"Kyooma" R98	Inaudible	35	Inaudible#	35
I	Kurrara St, WC R57	Inaudible	35	Inaudible	35
J	Coronation Ave, WC	Inaudible#	35	Inaudible#	35
K	Alco Park (R21*)	Inaudible	40	Inaudible#	40
L	West St, WC (R103)	Inaudible	35	Inaudible#	35

WC – Werris Creek; * - Private agreement in place with resident; **Yellow Bold** – Elevated noise; # Adverse weather with wind >3m/s, temperature inversions >+12°C/100m or >2m/s and >0°C/100m; 1 – R22 criteria is 36 dB(A) L_{eq 15min} while R9 is 37 dB(A) L_{eq 15min}

NM- Denotes Not Measurable. If site only noise is noted as NM, this means some noise from the source of interest was audible at low-levels, but could not be quantified

4th and 5th Thursday-Friday, September 2025

Location	Day dB(A) L _{eq}	Criteria dB(A) L _{eq}	Evening/Night dB(A) L _{eq}	Criteria dB(A) L _{eq}
	15min	15min	15min	15min
A "Rosehill" R5	Inaudible	35	Inaudible#	35
B West Quipolly (R7*, R8*, R9* & R22*)	Inaudible	40	Inaudible	40
C Central Quipolly(R10*, R11*)	Inaudible	40	Inaudible	40
D "Hazeldene" R24	Inaudible	37	Inaudible	37
E "Railway Cottage" R12	Inaudible	38	Inaudible	38
F "Talavera" R96	Inaudible	38	Inaudible#	37
H "Kyooma" R98	Inaudible	35	Inaudible	35
I Kurrara St, WC R57	Inaudible	35	Inaudible	35
J Coronation Ave, WC	Inaudible	35	Inaudible	35
K Alco Park (R21*)	Inaudible	40	Inaudible	40
L West St, WC (R103)	Inaudible	35	Inaudible	35

WC – Werris Creek; * - Private agreement in place with resident; **Yellow Bold** – Elevated noise; # Adverse weather with wind >3m/s, temperature inversions >+12°C/100m or >2m/s and >0°C/100m; 1 – R22 criteria is 36 dB(A) L_{eq 15min} while R9 is 37 dB(A) L_{eq 15min}

NM- Denotes Not Measurable. If site only noise is noted as NM, this means some noise from the source of interest was audible at low-levels, but could not be quantified

29th and 30th Wednesday-Thursday, October 2025

Location	Day dB(A) L _{eq}	Criteria dB(A) L _{eq}	Evening/Night dB(A) L _{eq}	Criteria dB(A) L _{eq}
	15min	15min	15min	15min
A "Rosehill" R5	Inaudible	35	Inaudible	35
B West Quipolly (R7*, R8*, R9* & R22*)	Inaudible	40	Inaudible	40
C Central Quipolly(R10*, R11*)	Inaudible	40	Inaudible	40
D "Hazeldene" R24	Inaudible	37	Inaudible	37
E "Railway Cottage" R12	Inaudible	38	Inaudible	38
F "Talavera" R96	Inaudible	38	Inaudible	37
H "Kyooma" R98	Inaudible	35	Inaudible	35
I Kurrara St, WC R57	Inaudible	35	Inaudible	35
J Coronation Ave, WC	Inaudible	35	Inaudible	35
K Alco Park (R21*)	Inaudible	40	Inaudible#	40
L West St, WC (R103)	Inaudible	35	Inaudible	35

WC – Werris Creek; * - Private agreement in place with resident; **Yellow Bold** – Elevated noise; # Adverse weather with wind >3m/s, temperature inversions >+12°C/100m or >2m/s and >0°C/100m; 1 – R22 criteria is 36 dB(A) L_{eq 15min} while R9 is 37 dB(A) L_{eq 15min}

NM- Denotes Not Measurable. If site only noise is noted as NM, this means some noise from the source of interest was audible at low-levels, but could not be quantified

19th-21st Wednesday-Friday, November 2025

	Location	Day dB(A) L _{eq}	Criteria dB(A) L _{eq}	Evening/Night dB(A) L _{eq}	Criteria dB(A) L _{eq}
		15min	15min	15min	15min
A	"Rosehill" R5	Inaudible#	35	Inaudible#	35
B	West Quipolly (R7*, R8*, R9* & R22*)	Inaudible#	40	Inaudible#	40
C	Central Quipolly(R10*, R11*)	Inaudible#	40	Inaudible	40
D	"Hazeldene" R24	Inaudible#	37	Inaudible#	37
E	"Railway Cottage" R12	Inaudible#	38	Inaudible	38
F	"Talavera" R96	Inaudible#	38	Inaudible	37
H	"Kyooma" R98	Inaudible#	35	Inaudible#	35
I	Kurrara St, WC R57	Inaudible	35	Inaudible#	35
J	Coronation Ave, WC	Inaudible#	35	Inaudible	35
K	Alco Park (R21*)	Inaudible#	40	Inaudible#	40
L	West St, WC (R103)	Inaudible	35	Inaudible#	35

WC – Werris Creek; * - Private agreement in place with resident; **Yellow Bold** – Elevated noise; # Adverse weather with wind >3m/s, temperature inversions >+12°C/100m or >2m/s and >0°C/100m; 1 – R22 criteria is 36 dB(A) L_{eq 15min} while R9 is 37 dB(A) L_{eq 15min}

NM- Denotes Not Measurable. If site only noise is noted as NM, this means some noise from the source of interest was audible at low-levels, but could not be quantified

2nd and 3rd Tuesday-Wednesday, December 2025

	Location	Day dB(A) L _{eq}	Criteria dB(A) L _{eq}	Evening/Night dB(A) L _{eq}	Criteria dB(A) L _{eq}
		15min	15min	15min	15min
A	"Rosehill" R5	Inaudible	35	Inaudible	35
B	West Quipolly (R7*, R8*, R9* & R22*)	Inaudible	40	Inaudible	40
C	Central Quipolly(R10*, R11*)	Inaudible	40	Inaudible	40
D	"Hazeldene" R24	Inaudible	37	Inaudible	37
E	"Railway Cottage" R12	Inaudible	38	Inaudible	38
F	"Talavera" R96	Inaudible	38	Inaudible	37
H	"Kyooma" R98	Inaudible	35	Inaudible	35
I	Kurrara St, WC R57	Inaudible#	35	Inaudible	35
J	Coronation Ave, WC	Inaudible	35	Inaudible	35
K	Alco Park (R21*)	Inaudible#	40	Inaudible#	40
L	West St, WC (R103)	Inaudible#	35	Inaudible#	35

WC – Werris Creek; * - Private agreement in place with resident; **Yellow Bold** – Elevated noise; # Adverse weather with wind >3m/s, temperature inversions >+12°C/100m or >2m/s and >0°C/100m; 1 – R22 criteria is 36 dB(A) L_{eq 15min} while R9 is 37 dB(A) L_{eq 15min}

NM- Denotes Not Measurable. If site only noise is noted as NM, this means some noise from the source of interest was audible at low-levels, but could not be quantified

3.1.2 Discussion - Compliance / Non-Compliance

Noise from Werris Creek Coal Mine was inaudible at all but two monitoring sites during the reporting period. “Kyooma” R98 and “Talavera” R96 which recorded readings in July and August 2025 respectively were below the relevant criteria.

3.2 Noise complaints

There were no noise complaints recorded during the period.

4.0 BLASTING

Blasting no longer occurs at Werris Creek Mine.

5.0 WATER

The groundwater monitoring program monitors groundwater levels bi-monthly and groundwater quality six monthly. Surface water monitoring is undertaken quarterly.

5.1 GROUND WATER

Groundwater monitoring is undertaken to identify if there are any impacts on groundwater quality and water levels as a result of the mining operations. WCC monitors approximately 38 groundwater wells/bores and piezometers in the key aquifers surrounding WCC including Werris Basalt (next to WCC and further afield) and Quipolly Creek Alluvium. Groundwater level surveys were completed between 5 and 29 August 2025, 3 and 31 October 2025, and 2 and 23 December 2025. Groundwater monitoring locations are identified in **Figure 4**.

5.1.1 Monitoring Data Results

A summary of groundwater monitoring results has been provided below.

Site		August-25		October-25		December-25	
		mbgl	%	mbgl	%	mbgl	%
Werrie Basalt near WCC	MW1	56.41	1%	55.48	2%	54.59	2%
	MW2	29.10	3%	25.65	13%	24.96	3%
	MW3	15.10	1%	14.84	2%	14.68	1%
	MW4B	12.20	2%	11.82	3%	11.48	3%
	MW5	8.03	6%	7.78	8%	7.76	3%
	MW6	13.02	1%	12.68	3%	12.37	3%
	MW27*	48.75	0%	47.51	3%	47.25	1%
	MW36A	20.33	-4%	19.57	4%	19.73	-1%
	MW36B	20.32	1%	19.61	4%	19.83	-1%
Werrie Basalt	MW8*	11.71	14%	10.61	10%	11.39	-7%
	MW10	8.66	6%	7.28	19%	6.96	5%
	MW14	15.56	0%	14.40	8%	14.63	-2%
	MW17B*	8.24	9%	8.02	3%	8.21	-2%
	MW19A*	3.63	37%	3.85	-6%	4.46	-14%
	MW20*	17.26	1%	16.82	3%	16.64	1%
	MW38A	11.45	2%	11.02	4%	10.48	5%
	MW38B*	9.10	0%	9.11	0%	9.05	1%
	MW38C*	Pump over bore		Pump over bore		Pump over bore	
	MW38E*	7.25	3%	7.08	2%	7.13	-1%
	MW41	4.31	18%	4.27	1%	4.53	-6%
	MW43	4.01	12%	4.23	-5%	4.25	0%
	# ¹	MW24A*	11.78	2%	11.77	0%	11.68
MW29*		9.95	0%	9.81	1%	10.41	-6%
Quipolly Alluvium	MW12*	6.52	14%	5.32	23%	5.90	-10%
	MW13*	4.46	5%	4.56	-2%	4.66	-2%
	MW13B*	3.11	6%	3.43	-9%	3.51	-2%
	MW13D*	4.06	11%	4.59	-12%	4.58	0%
	MW16*	3.75	15%	3.57	5%	3.80	-6%
	MW17A*	2.73	20%	2.94	-7%	2.86	3%
	MW18A*	2.30	35%	2.43	-5%	2.59	-6%
	MW21A*	5.21	13%	4.31	21%	4.55	-5%
	MW22A*	3.61	18%	3.54	2%	3.75	-6%
	MW22B*	3.71	18%	3.60	3%	3.80	-5%
	MW23A*	3.17	13%	3.56	-11%	3.73	-5%
	MW23B*	3.47	12%	3.87	-10%	3.99	-3%
	MW26B*	3.63	25%	3.48	4%	3.55	-2%
	MW28A*	5.70	22%	5.04	13%	6.68	-25%
	MW32*	3.78	0%	3.78	0%	3.81	-1%
	MW40	4.32	18%	4.24	2%	4.49	-6%
MW42	3.96	12%	4.07	-3%	4.16	-2%	
# ²	MW34*	Pump over bore		Pump over bore		Pump over bore	

mbgl – meters below ground level is the distance in meters from top of bore to groundwater surface; **Orange** – Change decrease; **Green** – change increase or no change; * - Indicates bore is used for water extraction unrelated to WCC (i.e. stock and domestic or irrigation). #¹ – Werrie Basalt in the Black Soil Gully valley to east of Werris Creek Mine. #² - Werris Creek Alluvium.

5.2 SURFACE WATER

Surface water monitoring is undertaken in local creeks offsite as well as from discharge point dirty water dams to monitor for potential water quality issues. Quarterly surface water monitoring was undertaken 26 August 2025 and 25 and 26 November 2025. Surface water monitoring locations are identified in **Figure 5**.

5.2.1 Monitoring Data Results

Summary of surface water quality monitoring results has been provided below.

26th August 2025

Site	pH	EC	TSS	O&G	Change from Previous Quarter or General Comments
ONSITE					
SB2	7.66	326	19	<5	Remained flowing
SB9	7.28	185	18	<5	Previously dry, now flowing
SB10	7.22	93	32	<5	Remained flowing
SB18	Dry	Dry	Dry	Dry	Remained dry
OFFSITE					
QCU	7.88	304	8	<5	Remained flowing
QCD	7.88	341	14	<5	Remained flowing
WCU	8.08	530	8	<5	Remained flowing
WCD	8.20	584	18	<5	Previously no access due to flooding, now flowing

pH – measure of acidity/alkalinity; EC – Electrical Conductivity measures salinity; TSS – Total Suspended Solids is a measure of suspended sediment in water (i.e. similar to turbidity); O&G – Oil and Grease measures amount of hydrocarbons (oils and fuels) in water. NA – No Access, NS – Not Sampled.

25th & 26th November 2025

Site	pH	EC	TSS	O&G	Change from Previous Quarter or General Comments
ONSITE					
SB2	Dry	Dry	Dry	Dry	Previously flowing, now dry
SB9	Dry	Dry	Dry	Dry	Previously flowing, now dry
SB10	Dry	Dry	Dry	Dry	Previously flowing, now dry
SB18	NS	NS	NS	NS	Previously dry, no sample taken
OFFSITE					
QCU	7.87	707	<5	<5	Remained flowing
QCD	8.23	762	<5	<5	Remained flowing
WCU	8.34	1190	<5	<5	Remained flowing
WCD	8.43	1150	<5	<5	Remained flowing

pH – measure of acidity/alkalinity; EC – Electrical Conductivity measures salinity; TSS – Total Suspended Solids is a measure of suspended sediment in water (i.e. similar to turbidity); O&G – Oil and Grease measures amount of hydrocarbons (oils and fuels) in water. NA – No Access. NS – Not Sampled.

5.2.2 Discussion - Compliance / Non-Compliance

All water quality results were within long-term averages and the Site Water Management Plan trigger values.

5.3 SURFACE WATER DISCHARGES

5.3.1 Monitoring Data Results

There were four uncontrolled discharges in August 2025 following above average rainfall during the month. Sampling conducted within the Quipolly and Werris Creek system during the discharge events was in accordance with licence conditions.

Sample Date	Dam	pH	EC	TSS	O&G	Compliance	Type	5 Day Rain (mm)
3/08/2025	SB10 (EPA14)	7.21	93	53	<5	Yes	Un-controlled	55.6
4/08/2025	QCU (EPA25)	7.66	302	26	<5	Yes	Un-controlled	55.6
4/08/2025	QCD (EPA26)	7.83	293	53	<5	Yes	Un-controlled	55.6
4/08/2025	WCU (EPA23)	7.85	244	32	<5	Yes	Un-controlled	55.6
4/08/2025	WCD (EPA24)	7.87	282	76	<5	Yes	Un-controlled	55.6
21/08/2025	SB10 (EPA14)	7.11	91	86	<5	Yes	Un-controlled	42.6
22/08/2025	WCU (EPA23)	7.74	231	48	<5	Yes	Un-controlled	42.6
22/08/2025	WCD (EPA24)	7.86	252	321	<5	Yes	Un-controlled	42.6
Criteria		6.5 - 8.5	N/A	50	10			

Yellow Bold – Elevated result/non compliance

5.3.2 Discussion - Compliance / Non-Compliance

Sampling results were compliant with WCC's Environmental Protection License.

5.4 WATER COMPLAINTS

There were no water release complaints during the period.

6.0 COMPLAINTS SUMMARY

There were no complaints received during the reporting.

7.0 GENERAL

Please feel free to ask any questions in relation to the information contained within this document.

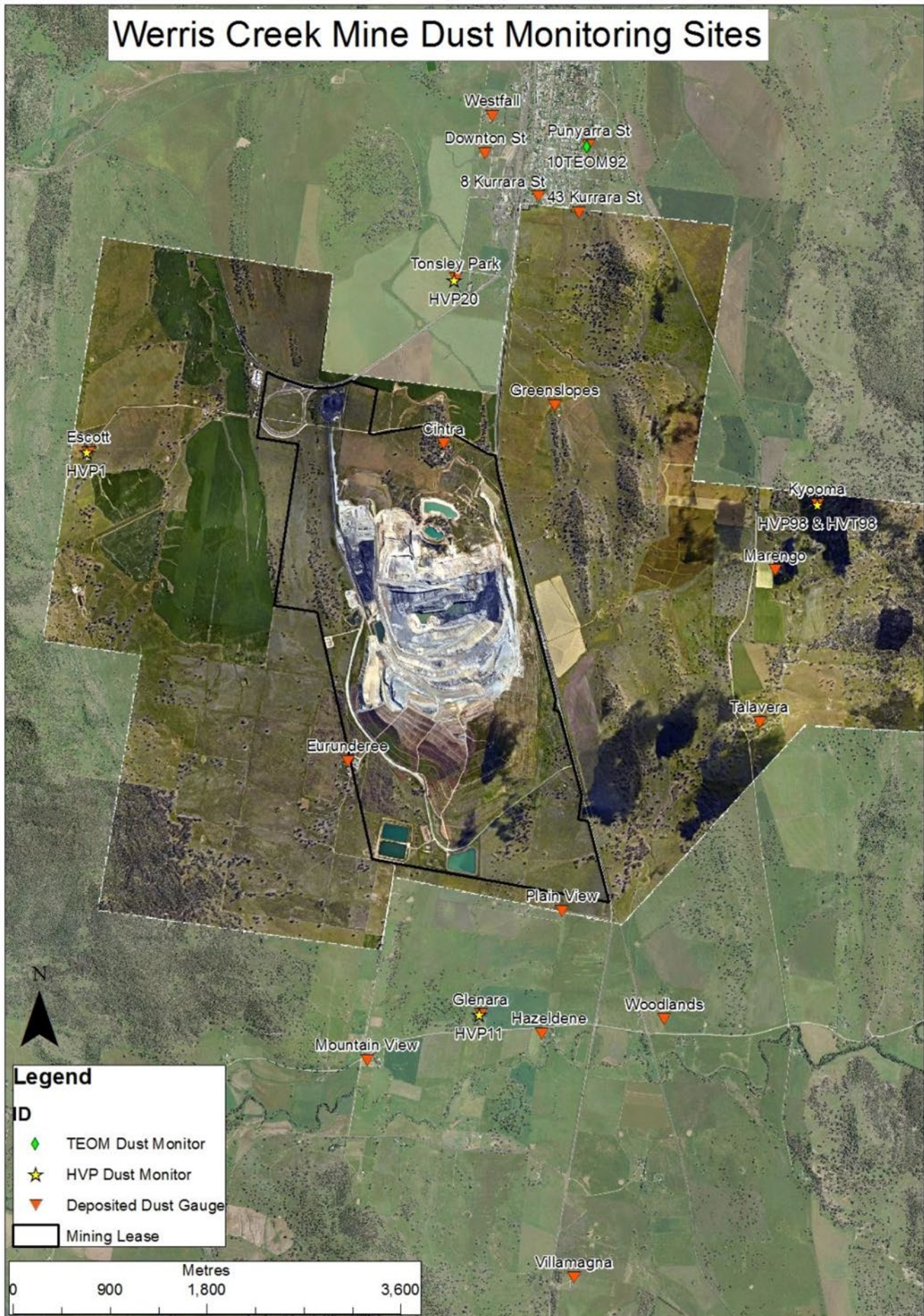


Figure 1 – WCC Dust Monitoring Locations



Figure 2– WCC Noise Monitoring Locations

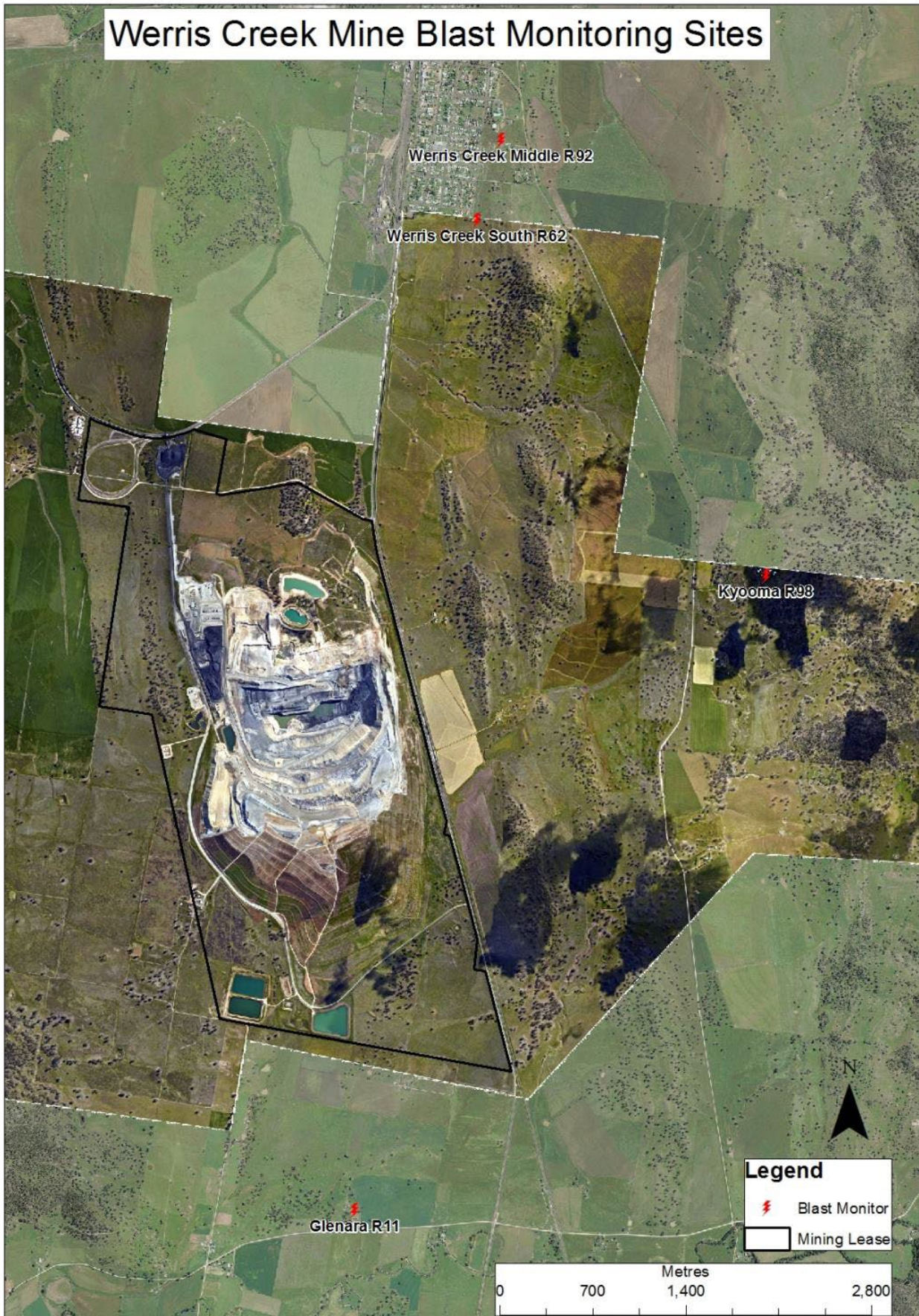


Figure 3 – WCC Blast Monitoring Locations – Note: No further blasting to be undertaken at Werris Creek Mine

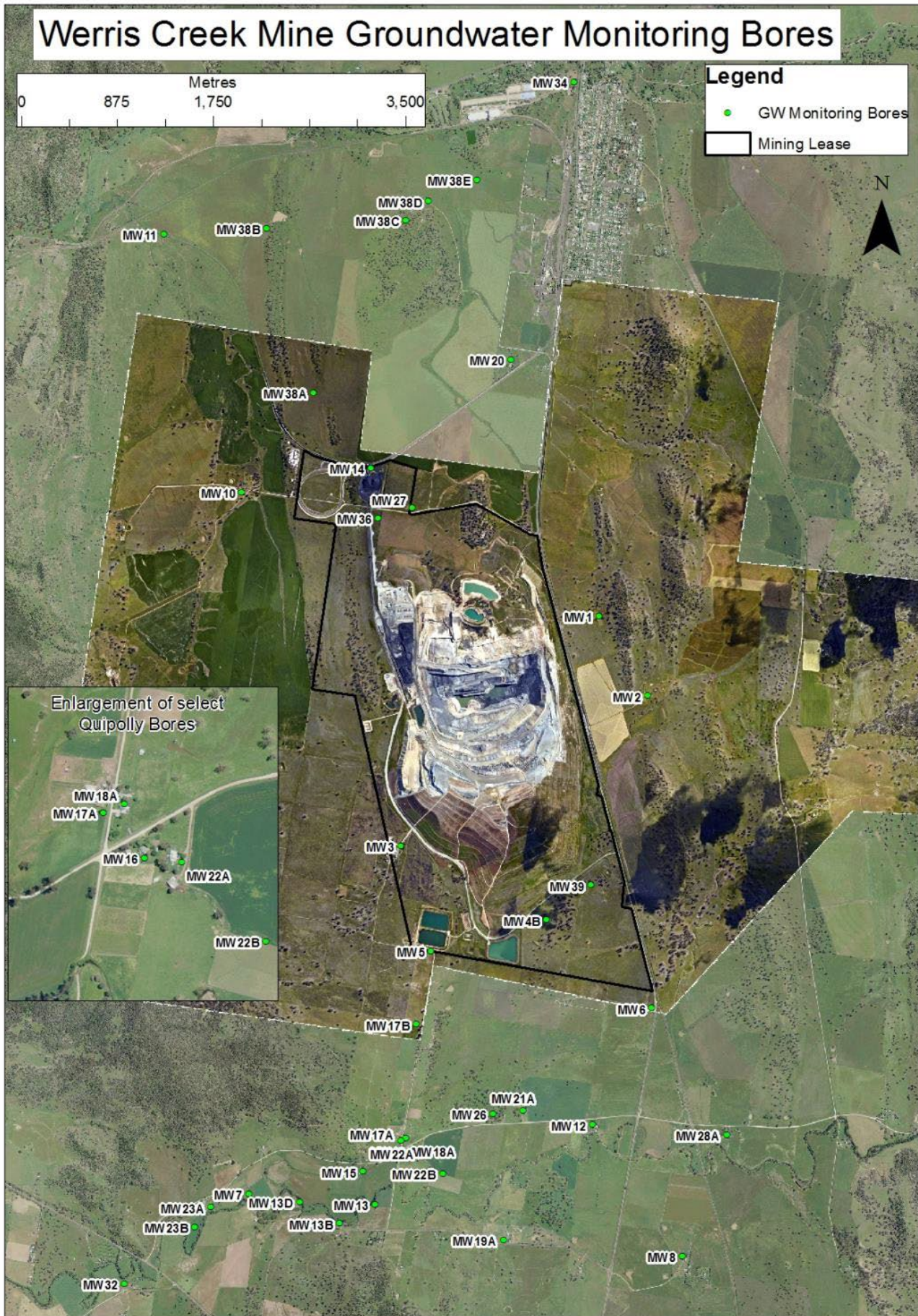


Figure 4 – WCC Groundwater Monitoring Locations



Figure 5 – WCC Surface Water Monitoring Locations